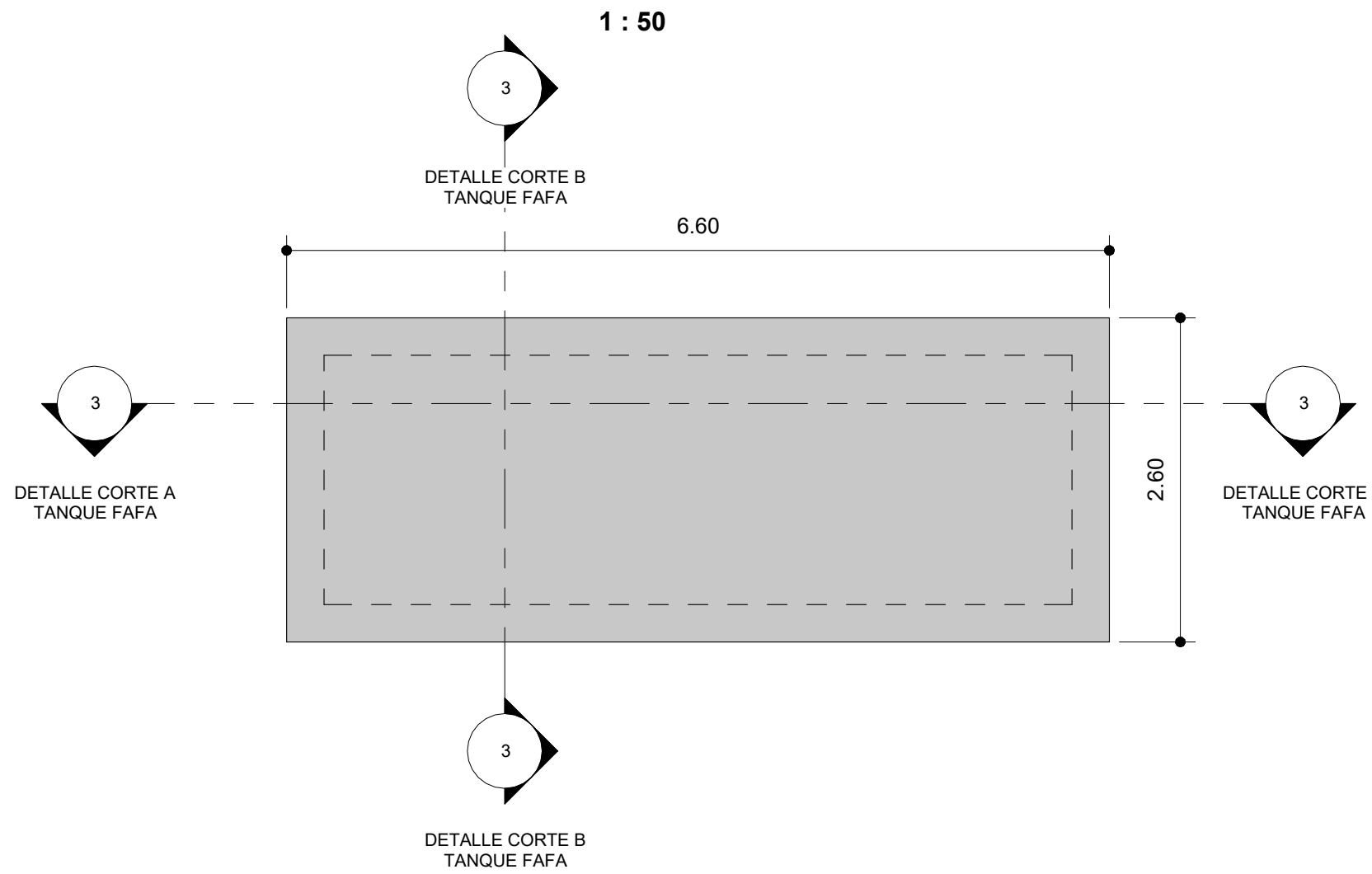
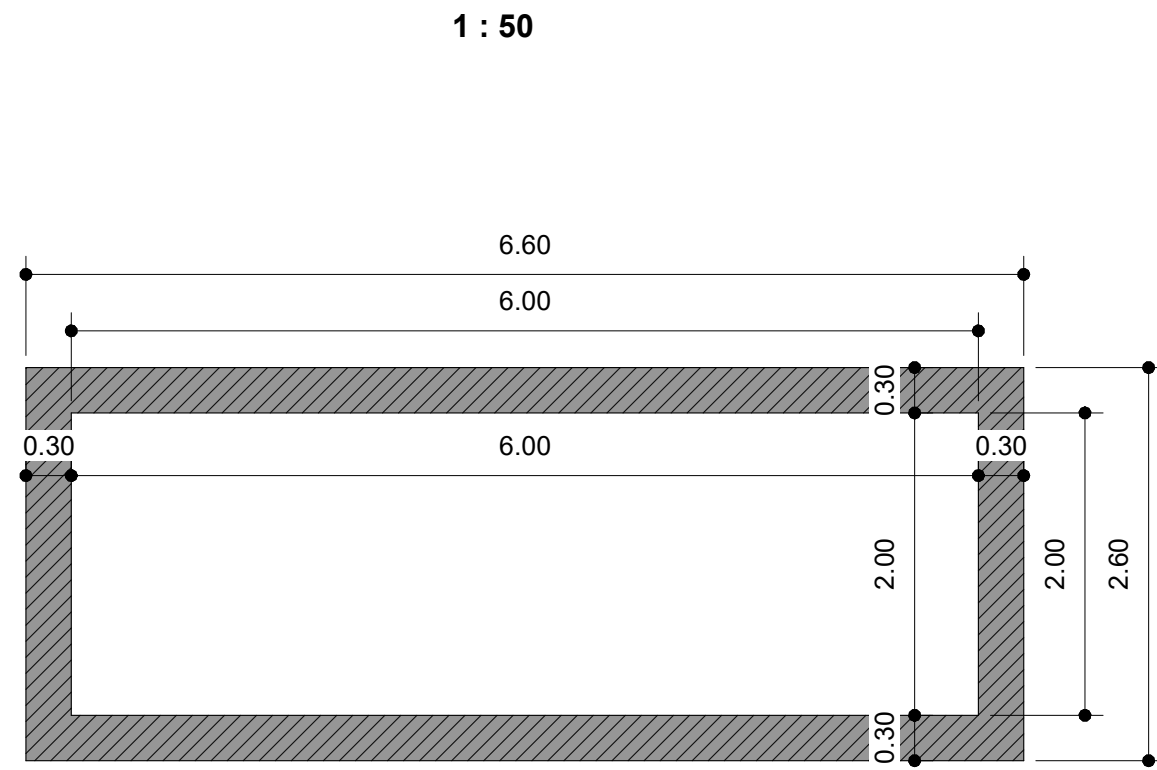


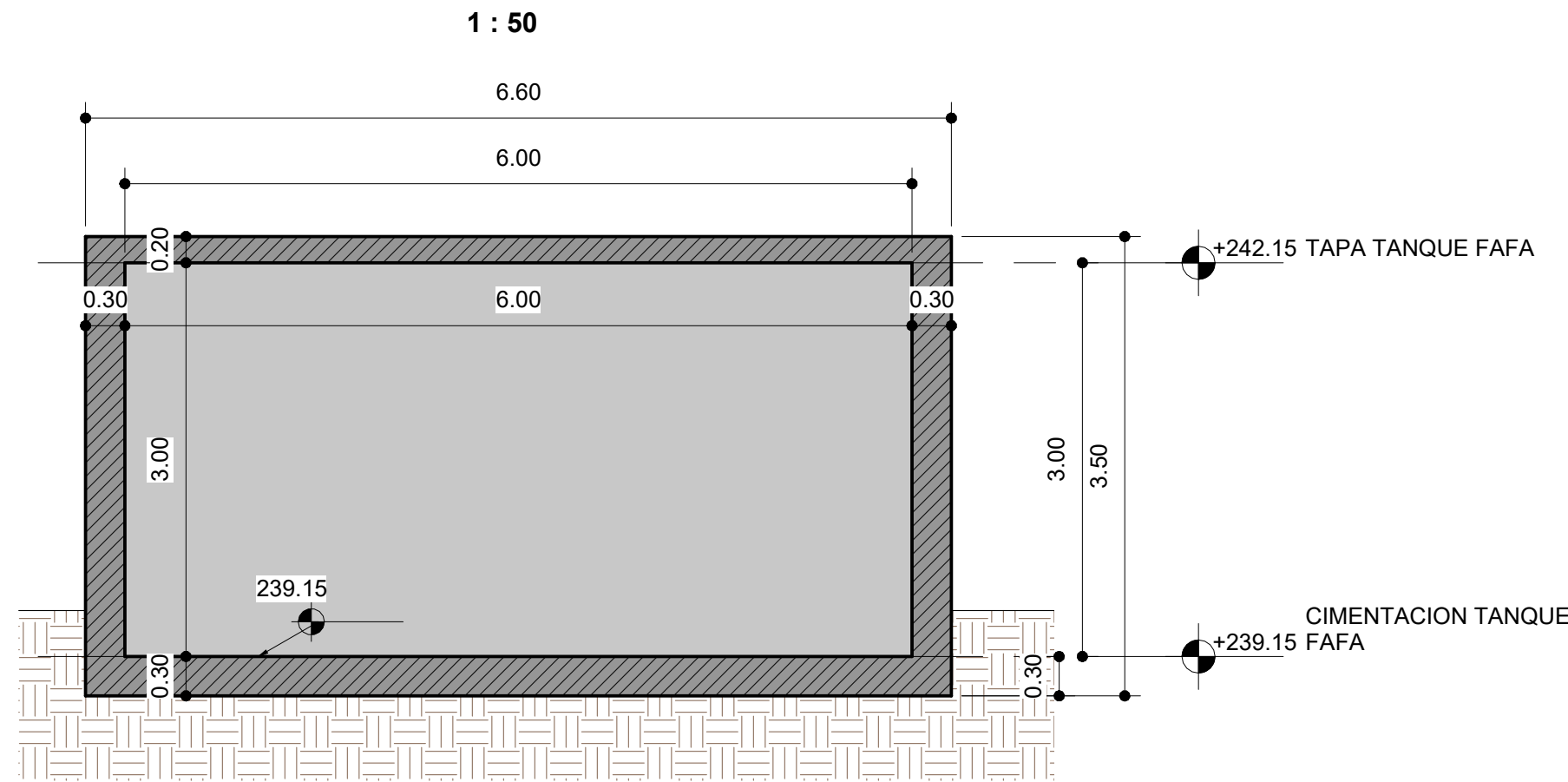
## PLATA ESTRUCTURAL TANQUE FAFA



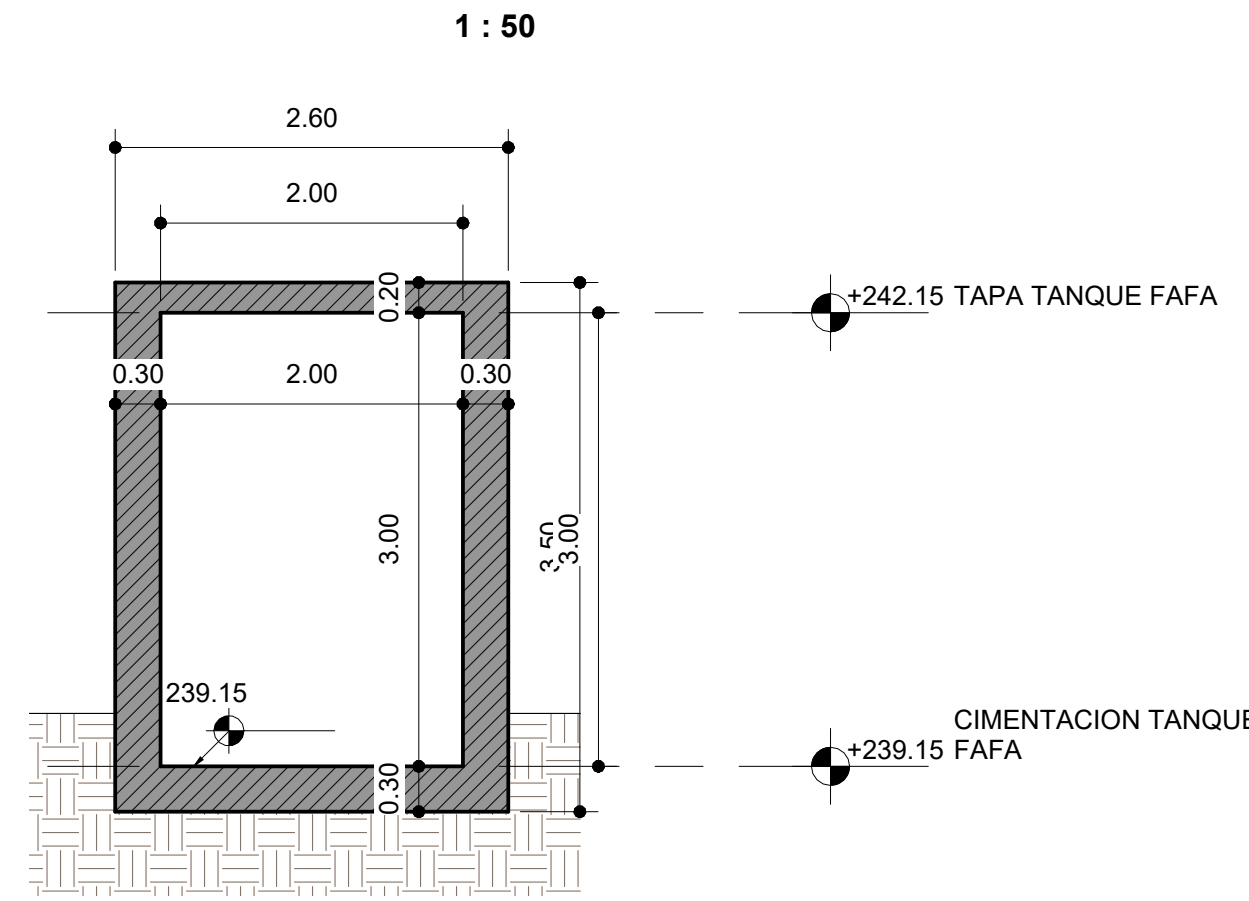
## PLANTA ESTRUCTURAL DE MUROS TANQUE FAFA



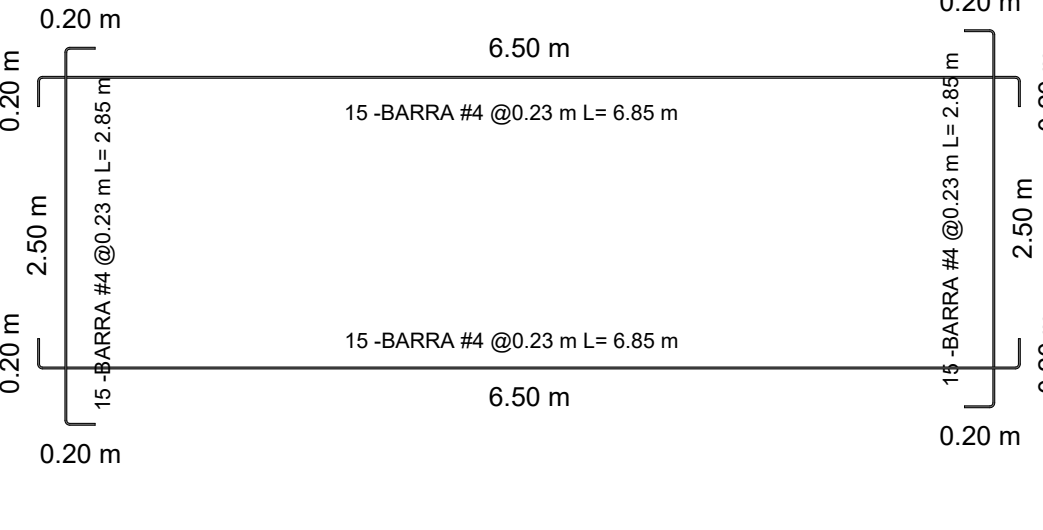
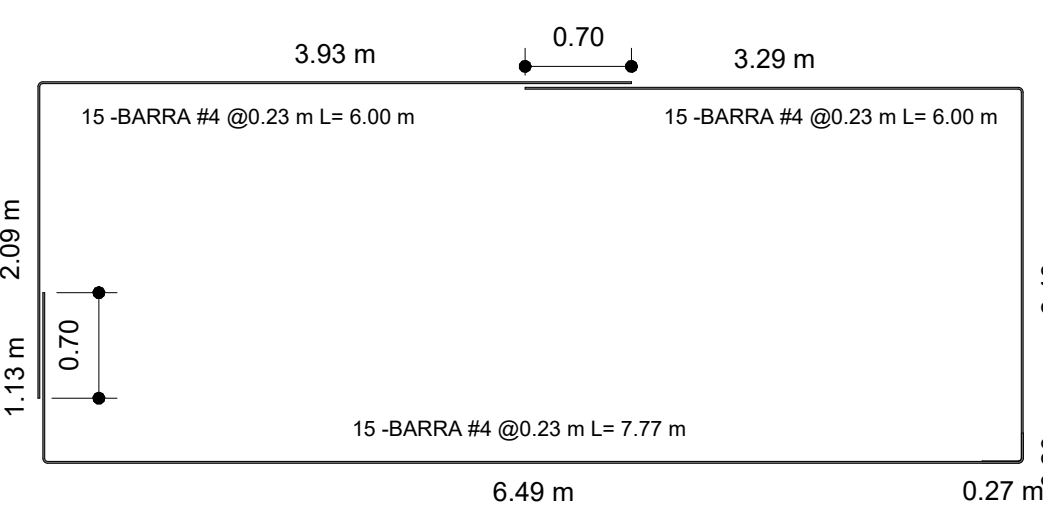
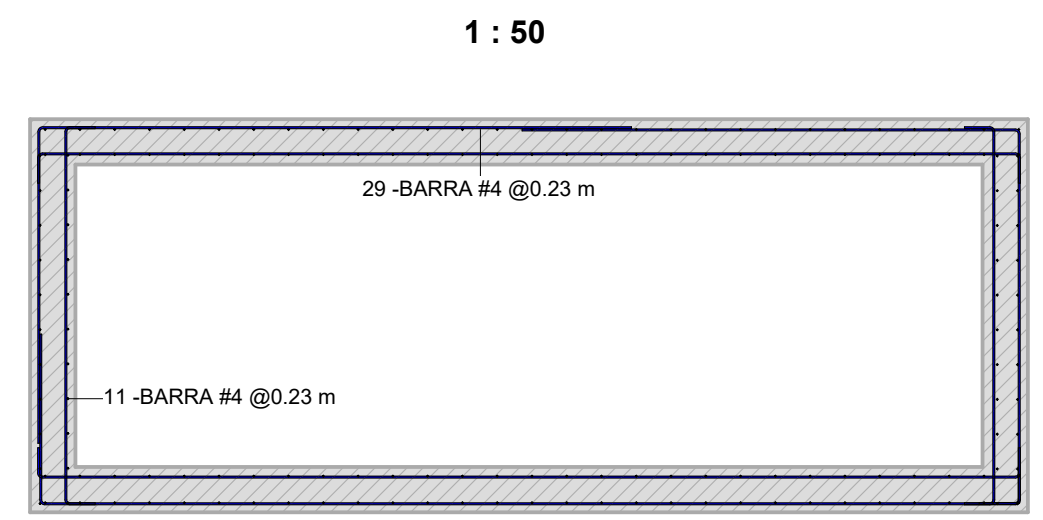
## DETALLE CORTE A TANQUE FAFA



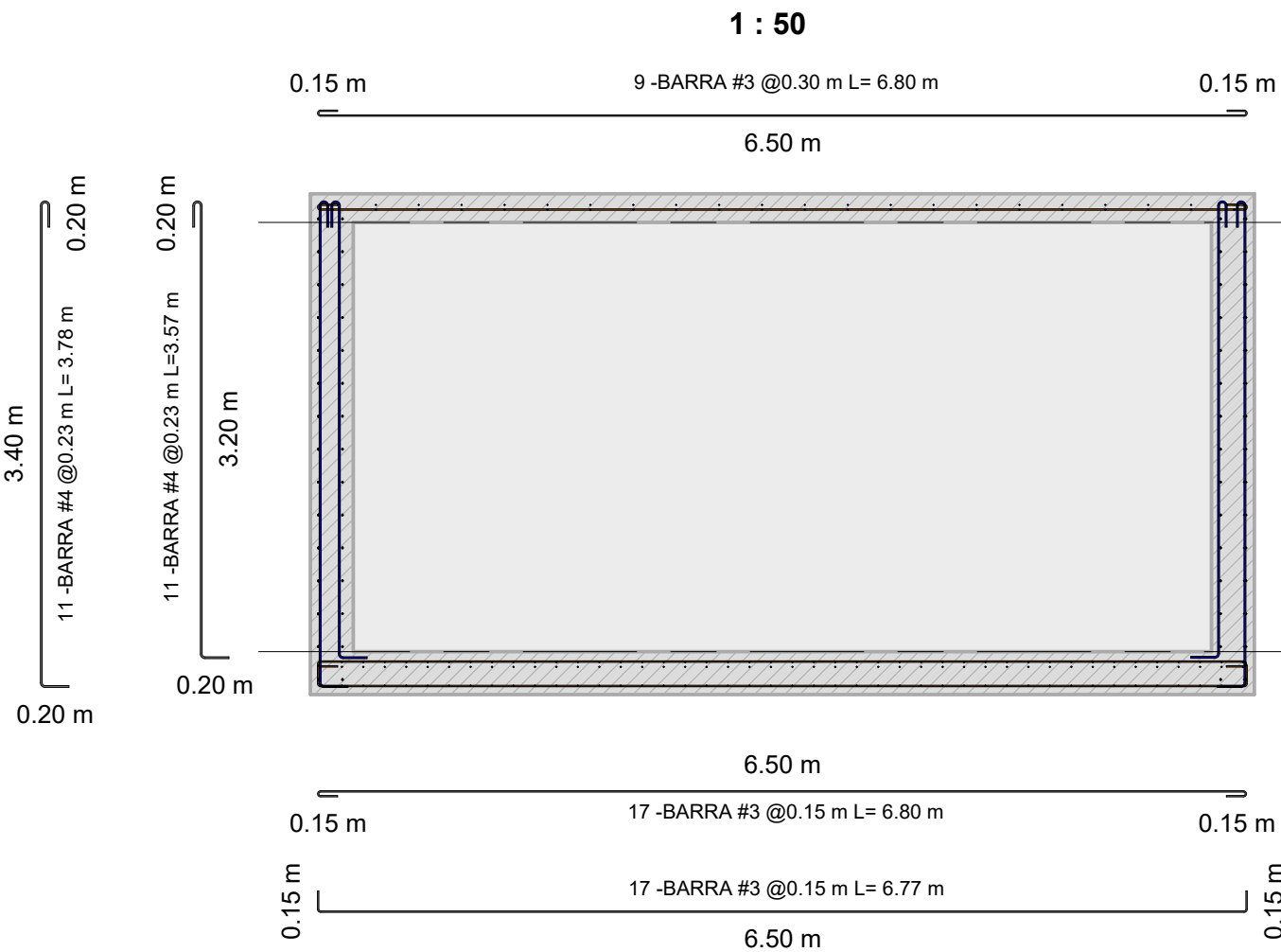
## DETALLE CORTE B TANQUE FAFA



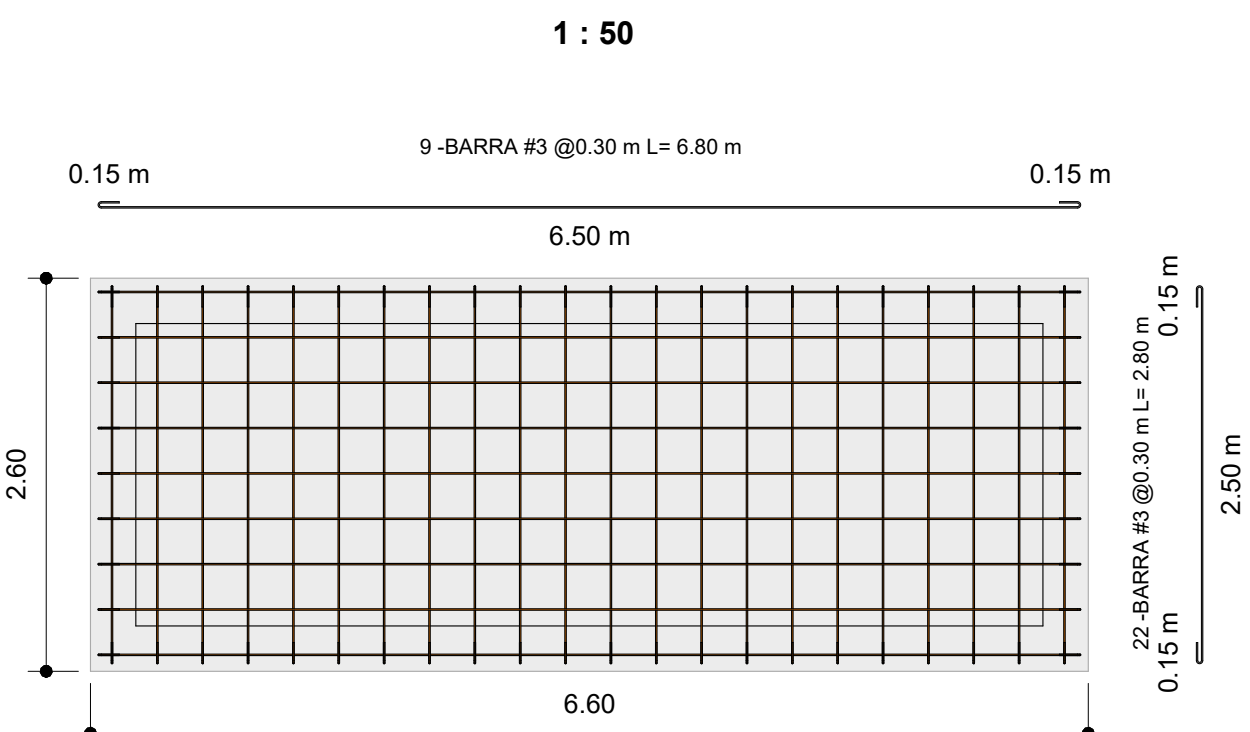
## DESPIECE ACEROS EN MUROS TANQUE FAFA



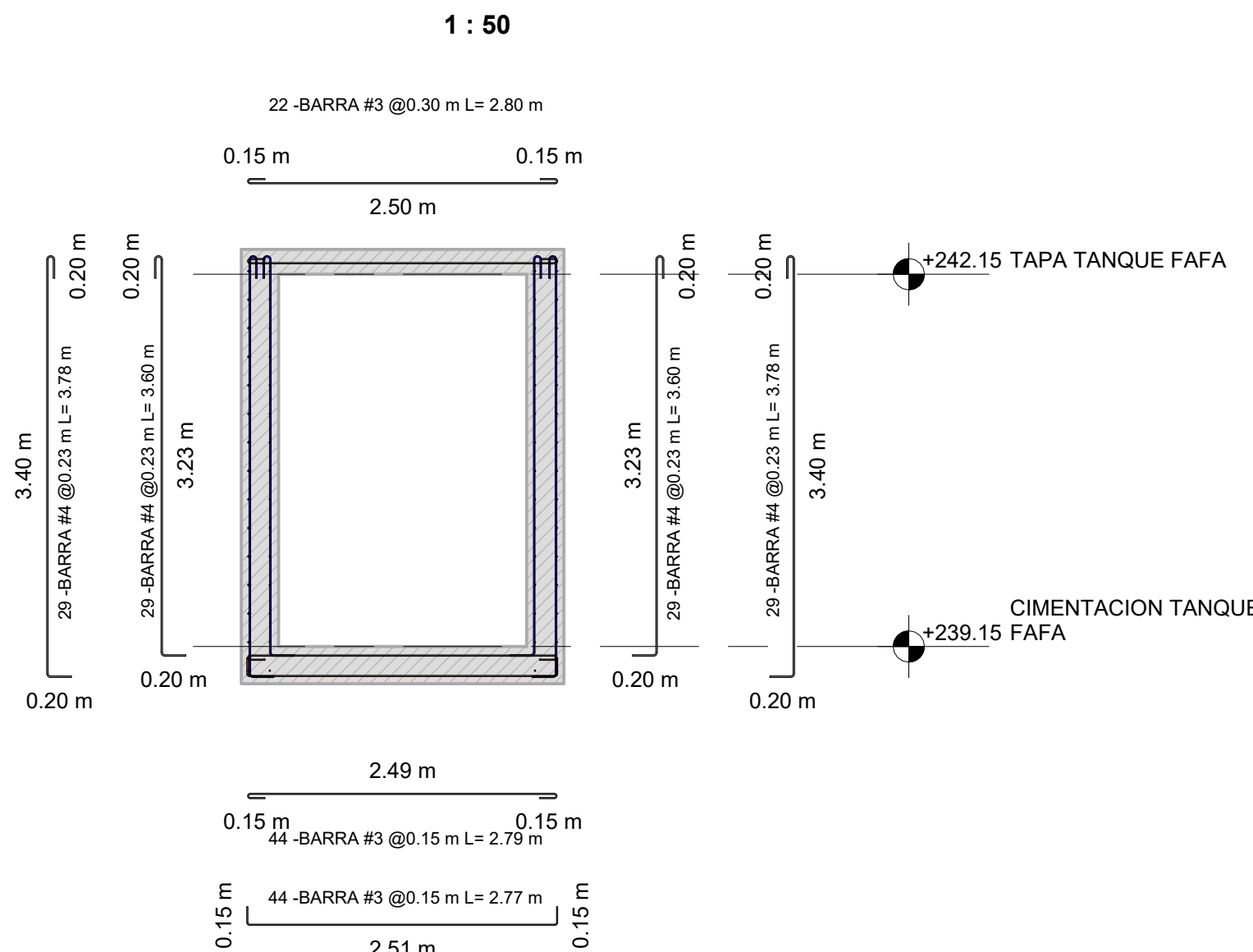
## DESPIECE CORTE A TANQUE FAFA



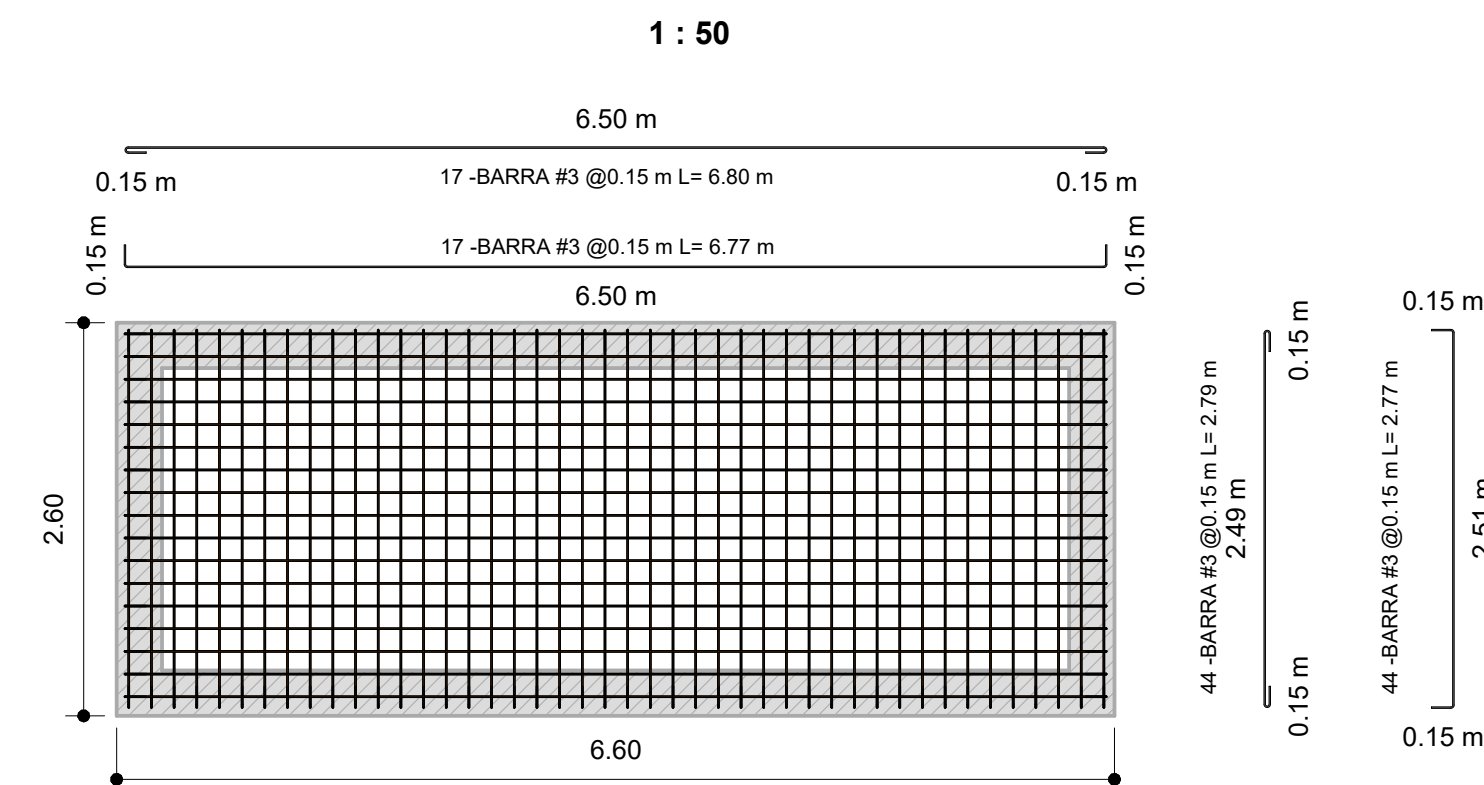
## DESPIECE ACEROS TAPA TANQUE FAFA



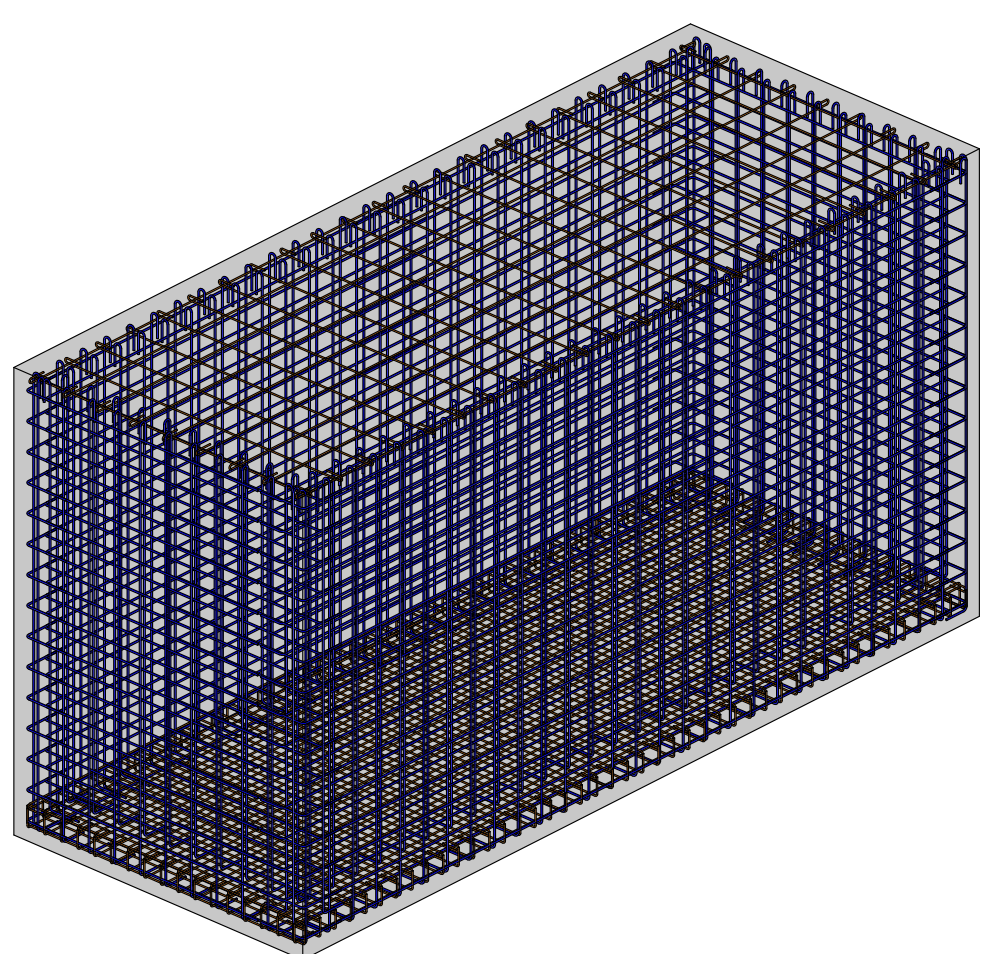
## DESPIECE CORTE B1 TANQUE FAFA



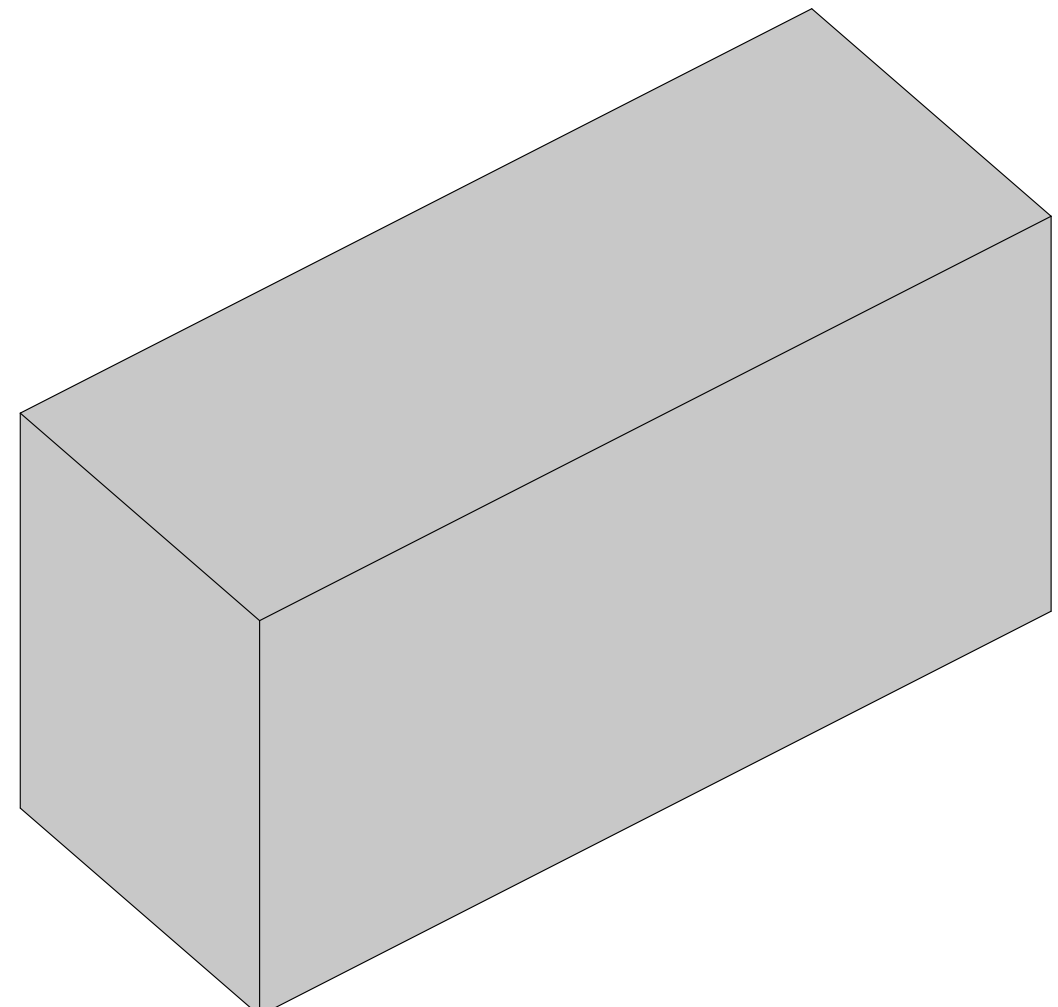
## DESPIECE ACEROS LOSA DE CIMENTACION TANQUE FAFA



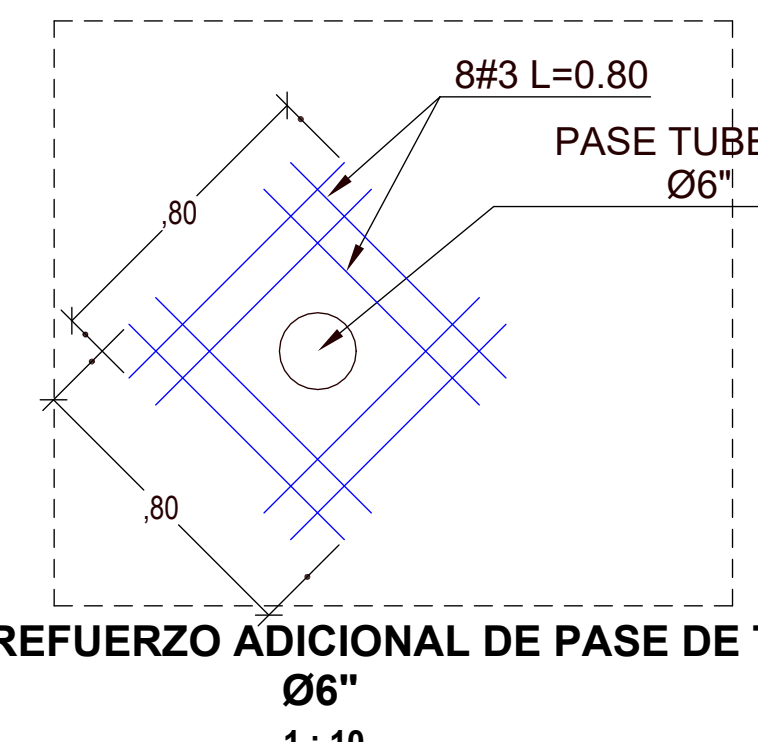
## ARMADURA DE ACERO EN ISOMETRICO TANQUE FAFA



## ISOMETRICO TANQUE FAFA



## DETALLE DE REFUERZO ADICIONAL DE PASE DE TUBERÍA



## DETALLE TIPO DE JUNTA DE CONSTRUCCIÓN.

